

SURVEY RESULTS ON THE QUALITY OF STUDIES 2016 FALL

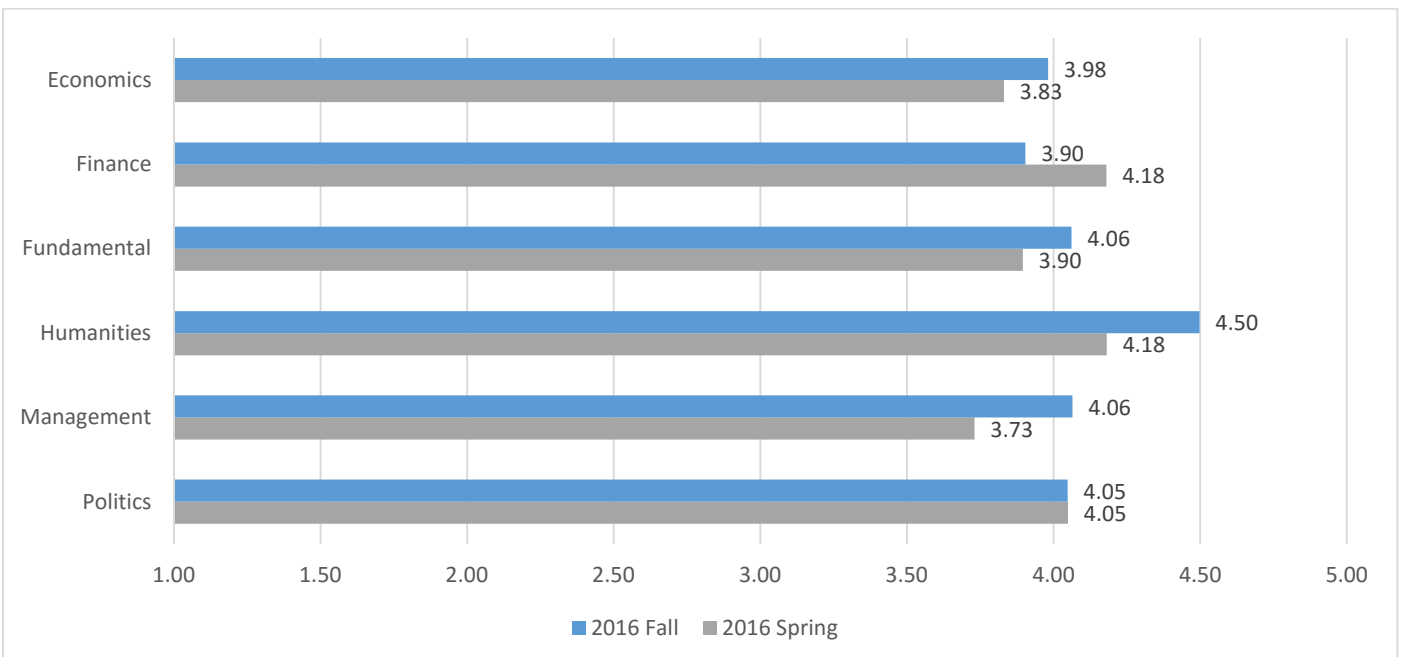
General information

The scale used:

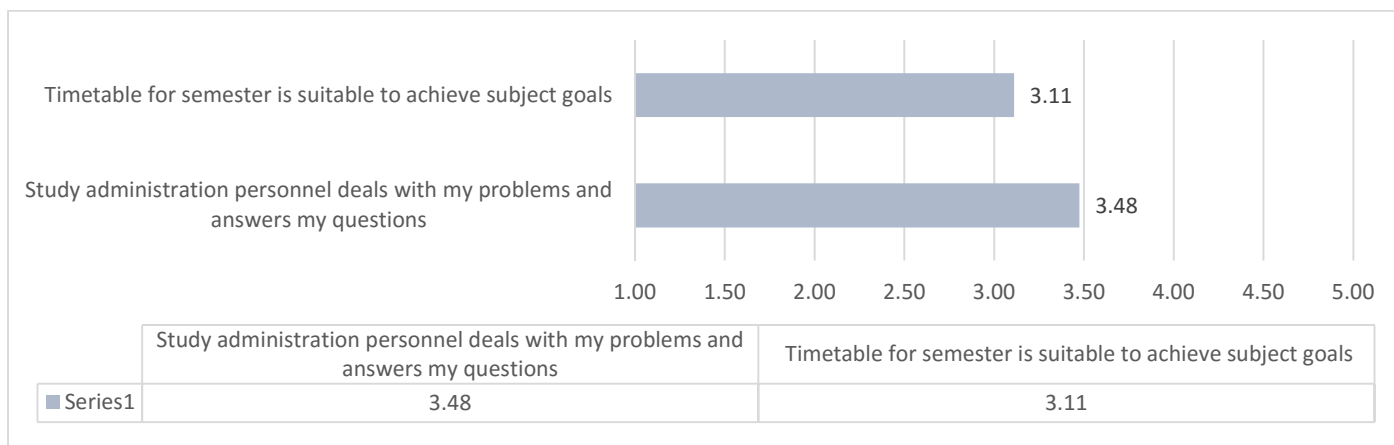
1	Strongly disagree
2	Disagree
3	Neither agree nor disagree
4	Agree
5	Strongly agree

Survey results on the quality of study subjects

Subject group	Responses received	Group size	Response rate	Assessment criteria are clear and transparent	I am satisfied with the subject	I gained new knowledge and skills in this course	The instructor clearly explains the course concepts	The instructor creates a learning environment that encourages student participation	The instructor makes the student feel welcome in seeking help in or outside the classroom	The time allocated to reach learning outcomes of this course is sufficient	Total average
Economics	219	709	30.89%	3.99	3.80	4.14	4.02	3.77	4.13	4.03	3.98
Finance	213	765	27.84%	3.78	3.78	4.14	3.90	3.83	4.06	3.85	3.90
Fundamental	226	848	26.65%	4.11	3.79	4.36	4.09	3.96	4.36	3.76	4.06
Humanities	162	744	21.77%	4.46	4.46	4.59	4.52	4.56	4.60	4.31	4.50
Management	407	1764	23.07%	3.89	3.86	4.09	4.18	4.06	4.26	4.11	4.06
Politics	57	166	34.34%	3.54	4.02	4.48	4.21	4.13	4.18	3.78	4.05
All Groups	1284	4996	25.70%	4.07	4.00	4.30	4.19	4.11	4.33	4.06	4.15

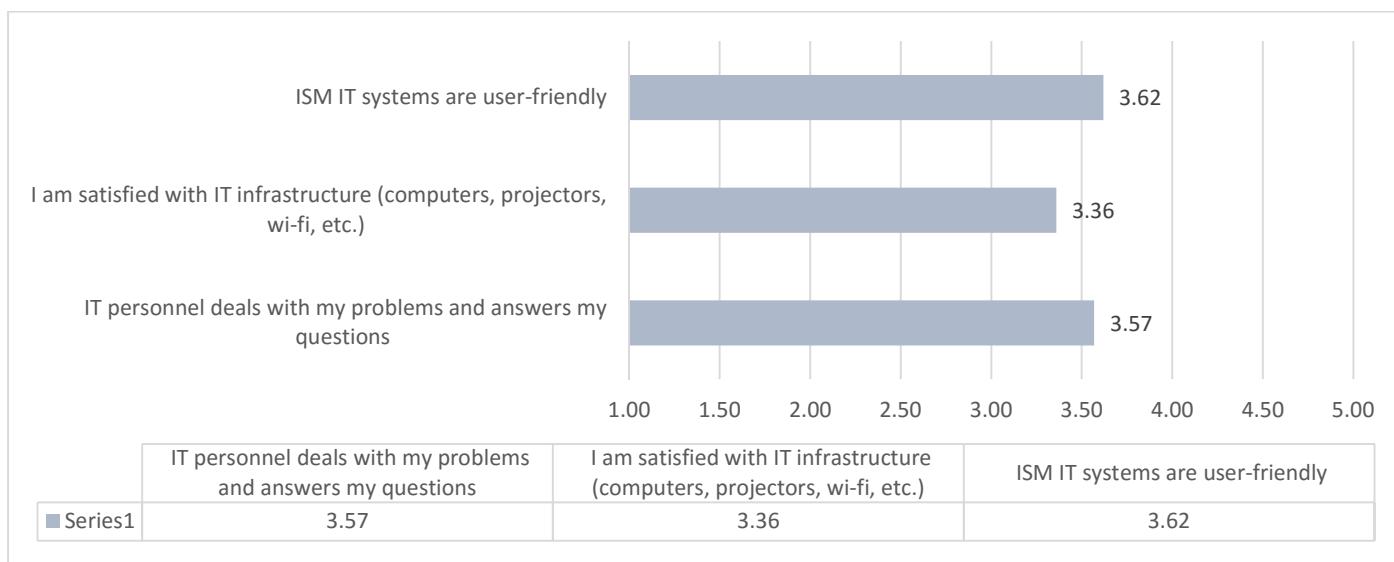


Study Administration



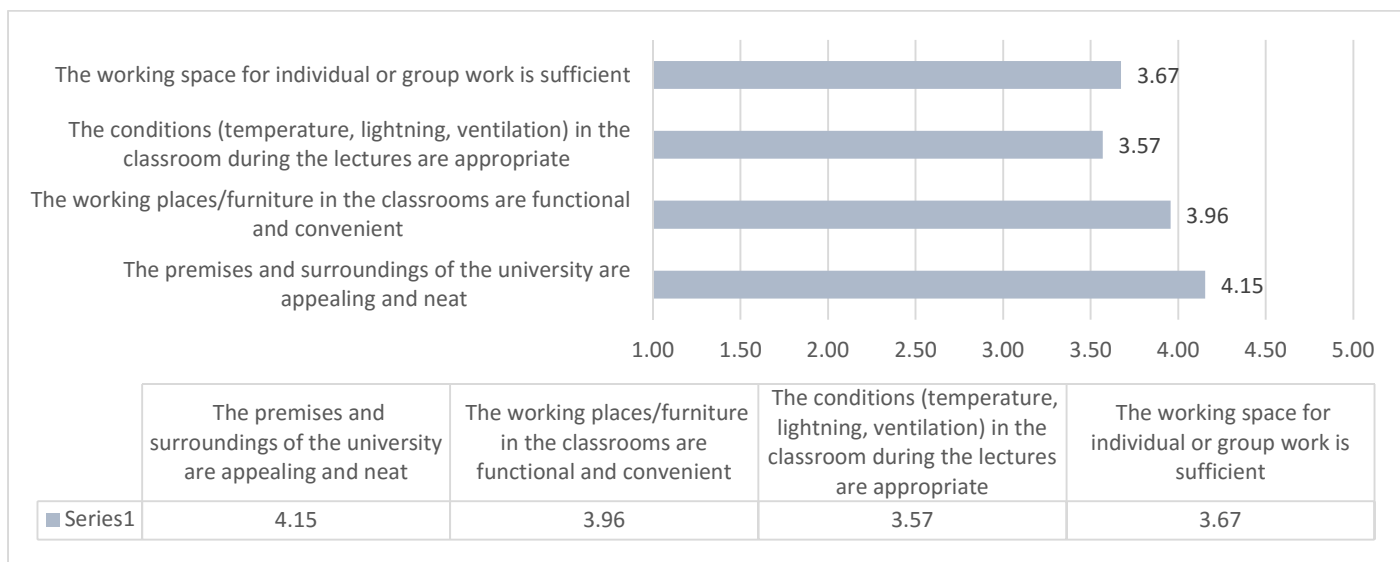
Comments and suggestions	Feedback to the students on Quality Improvement plan
Queries	All the queries regarding administration of studies should be addressed to your programme manager. The answers to the queries are provided within 3 working days. In urgent cases please contact your programme manager via phone or come the study office.
Schedule	At the beginning of the Spring Semester the final schedule of lectures is announced. This schedule can be changed exceptionally for important reasons; students are informed on any changes by e-mail and on E-learning website. <i>Please check for updates regularly.</i> The schedule of examinations will be discussed with the representatives from each programme and after approval will be announced to students.
Programme structure	All the comments related to relevant programmes will be transferred to programme directors for further processing/actions.

IT Systems



Comments and suggestions	Feedback to the students on Quality Improvement plan
Printing	Instructions for using printer are available at hallways (next to the printers), as well as at our helpdesk system (helpdesk.ism.lt).
Microphones	We have recently bought new microphones that will be used in the Spring Semester.
Queries	All the queries regarding IT should be addressed to hd.it@ism.lt . They should be replied within 3 working days.

Infrastructure



Comments and suggestions	Feedback to the students on Quality Improvement plan
Place for group/individual work	Recently we have arranged an additional place for group/individual work in the 3rd building on the 2 nd floor. Places for group/individual work are also available at our library, hallways and auditoriums. Also you may share the lounge room which is located on the 5th floor. The key is available at our reception; if it is already taken, you may just come in.
Ventilation/air conditioning system	Now we are renewing our ventilation system. In addition, we are developing a temperature monitoring system that would allow us to monitor and react more quickly to the temperature fluctuations in the auditoriums. We would like to remind you, that our staff is ready to help; so if something goes wrong there is always a possibility to ask for assistance.
Parking	University does not offer parking services at ISM or nearby
Recycle bins	We will check the opportunity with our service supplier to have different types of recycle bins. Besides general waste bins, now we have recycle bins for paper; you will find the orange boxes in the hallways.