

SURVEY RESULTS ON THE QUALITY OF STUDIES 2016

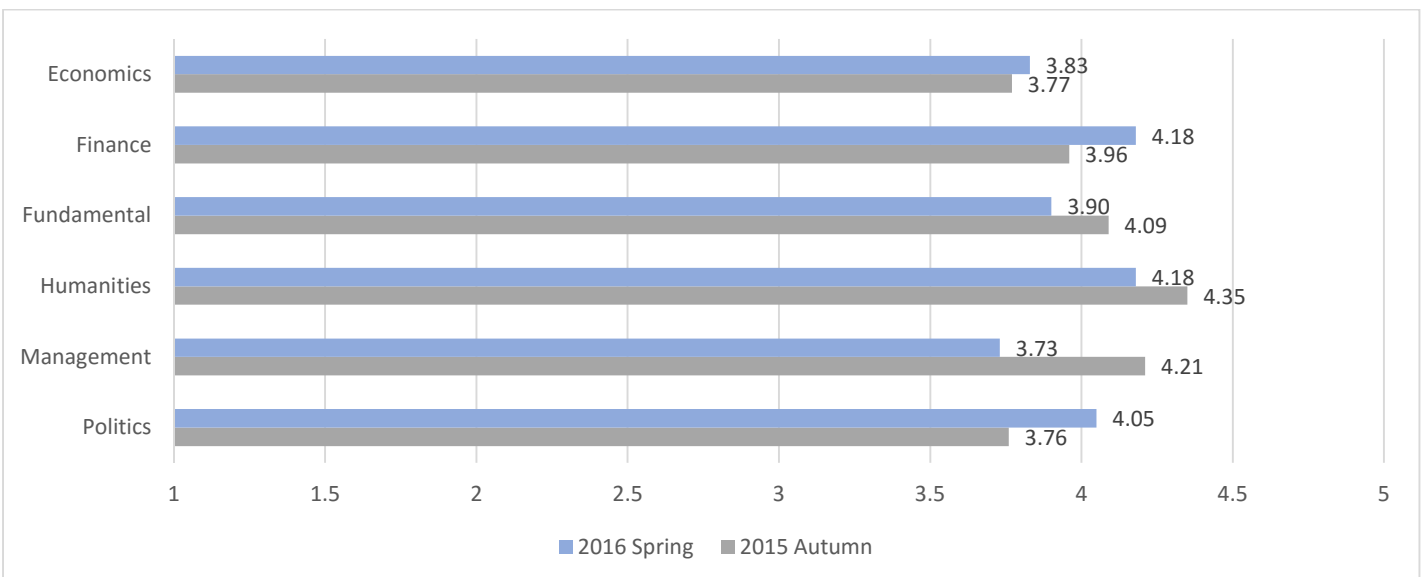
General information

The scale used:

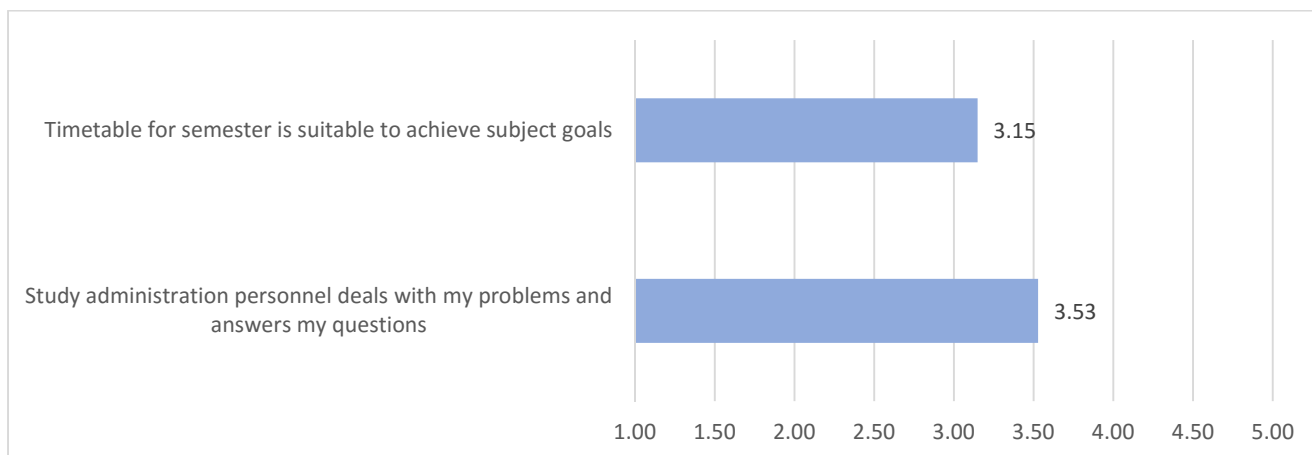
1	Strongly disagree
2	Disagree
3	Neither agree nor disagree
4	Agree
5	Strongly agree

Survey results on the quality of study subjects

Subject group	Total number of students in subjects	Responses received	Response rate	Assessment criteria are clear and transparent	I am satisfied with the subject	I gained new knowledge and skills in this course	The instructor clearly explains the course concepts	The instructor creates a learning environment that encourages student participation	The instructor makes the student feel welcome in seeking help in or outside the classroom	The time allocated to reach learning outcomes of this course is sufficient	Total average
Economics	242	790	31%	3.74	3.65	4.01	3.80	3.77	4.09	3.76	3.83
Finance	162	460	35%	4.05	4.07	4.30	4.20	4.17	4.31	4.16	4.18
Fundamental	221	711	31%	3.76	3.70	4.16	3.92	3.66	4.18	3.89	3.90
Humanities	186	680	27%	4.16	4.03	4.17	4.17	4.12	4.35	4.26	4.18
Management	419	1511	28%	3.64	3.54	3.81	3.76	3.61	3.94	3.81	3.73
Politics	86	195	44%	3.88	4.00	4.16	4.10	3.97	4.22	4.01	4.05
Total	1316	4347	30%	3.87	3.83	4.10	3.99	3.89	4.18	3.98	3.98

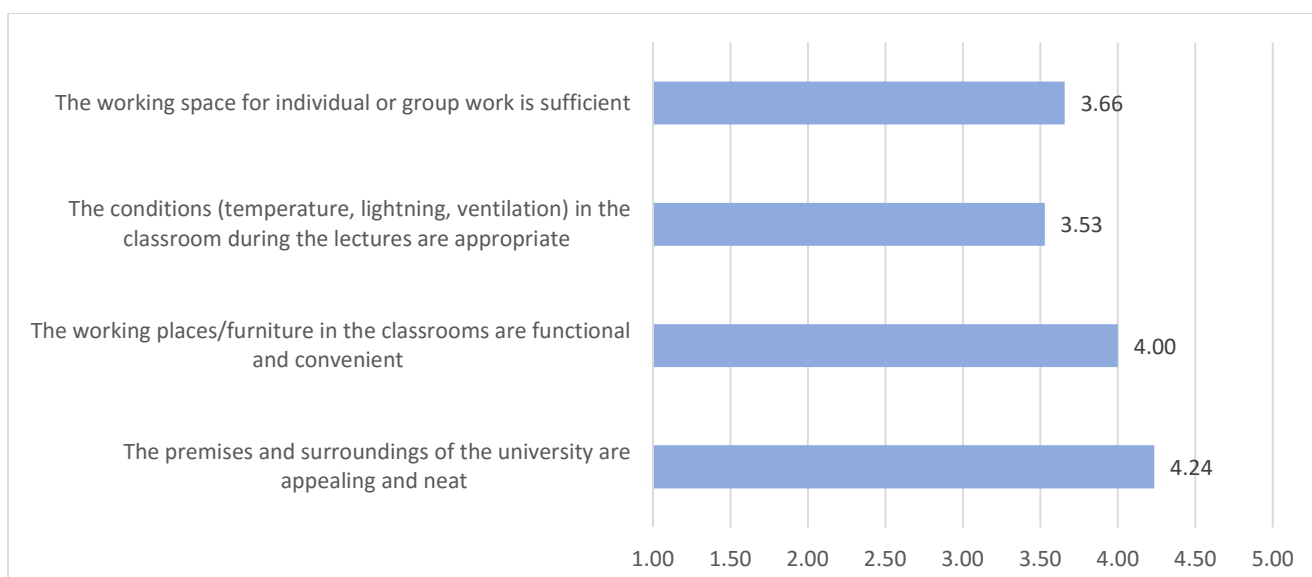


Study Administration



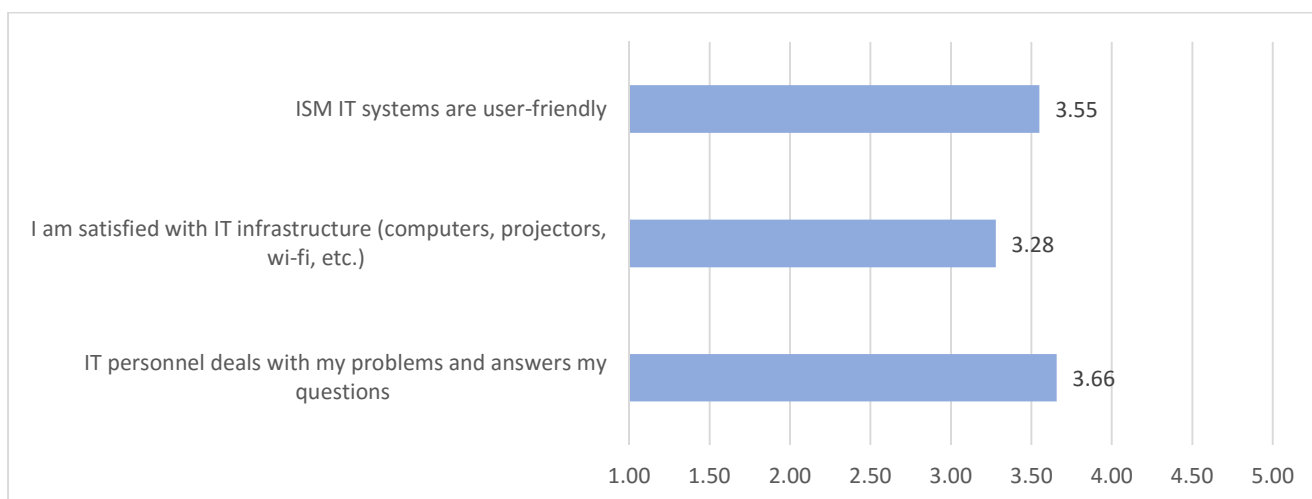
Comments and suggestions	Feedback to the students on Quality Improvement plan
Students services	Additional trainings for our academic and administrative staff to improve the students services will be organized.
Schedule	At the end of August, the final schedule of lectures and examinations for 2016 Fall semester is announced. This schedule can be changed exceptionally for important reasons; students are informed on any changes by e-mail and on E-learning site. Please check for updates regularly. Now we are in process to announce the schedule at my2.ism.lt; all the updates will be sent automatically.
Lecturers' work and teaching methods	results on evaluation of study subjects were discussed with the top-management. Programme directors will discuss the survey results and ways how to improve lecturer interaction with the lecturers. Winter Teachers Academy will be organized to improve faculty teaching and assessment skills. You are also more than welcome to give your feedback during semester directly to your Programme director.

Infrastructure



Comments and suggestions	Feedback to the students on Quality Improvement plan
Ventilation system	There is a possibility in most of the classrooms/auditoriums to adjust the temperature manually. Our staff is helpful so if something goes wrong there is always a possibility to ask for assistance. In addition, we will organize trainings for lecturers, study managers and coordinators to show them how to use the system in an efficient way.
Place for group work	Places for workgroup are now available at our library, lounge room, hallways and auditoriums, so we hope you will find a place to work with your group members
Chairs	We are trying to check the quality of our infrastructure as often as possible and take appropriate actions. Currently almost all the chairs are in a good condition. We have in mind that some of chairs in rooms 209 and 309 need to be fixed/replaced with the new ones; we will do that asap.
Parking	University does not offer parking services.
Vending machines	We have asked the operator of snacks vending machines to check and refill the machines more often. Also, we will add plastic cups to all the water vending machines. Please save our environment and use them only if you do not have a water container with you. Please also note that branded ISM cups could be purchased at our library.
Late stay in a university, library working hours	University is open from 7 A.M. till 10 P.M. If a student needs to stay longer, he/she must contact university administration in person and we will discuss the possibilities. Few years ago we made a survey regarding library working hours and we have prolonged working hours, but this service was not popular among students, so it was cancelled.

IT Systems



Comments and suggestions	Feedback to the students on Quality Improvement plan
Wi-Fi	We have one of the fastest Wi-Fi among Lithuanian universities. If you have problems to connect our Wi-Fi network, please contact IT administrators for assistance.
IT infrastructure, projectors	Our staff is helpful so if something goes wrong there is always a possibility to ask for assistance. In addition we will organize additional trainings for lecturers to show them how to use the IT systems in the most efficient way.
www.ism.lt	We are working on our website to make it more user-friendly.